



jordan fishwick

3 Alderley Lodge, SK9 6JR
Guide Price £282,500



Alderley Lodge Wilmslow SK9 6JR

Guide Price £282,500



Situated within superb proximity to Wilmslow town centre, this spacious two-bedroom ground floor apartment offers both convenience and comfort. Perfectly located just a short walk from vibrant bars, popular restaurants, boutique shops, and the train station, this home presents an ideal opportunity for downsizers, first-time buyers, or investors alike. Upon entering the property, you're welcomed by a well-appointed entrance hall leading to a modern, fully fitted kitchen complete with integrated appliances - including Quooker hot water tap. The bright and airy open-plan lounge and dining area features a large floor-to-ceiling window and sliding doors that open onto a private patio space and beautifully maintained communal gardens - a perfect spot to relax and unwind. The communal gardens wrap around the development, enhancing the tranquil setting and offering direct access from the living area. Off the hallway are two generously sized double bedrooms, both enjoying pleasant views. The recently refitted family bathroom is partially tiled and equipped with an accessible shower, wash basin, WC, and a chrome heated towel rail. Additional practicality is provided by two built-in storage cupboards in the hallway. Externally, the property benefits from residents parking and a private single garage with an up-and-over door, located at the rear of the development. A further private storage room, housing the gas combi boiler, is conveniently situated just outside the front door.



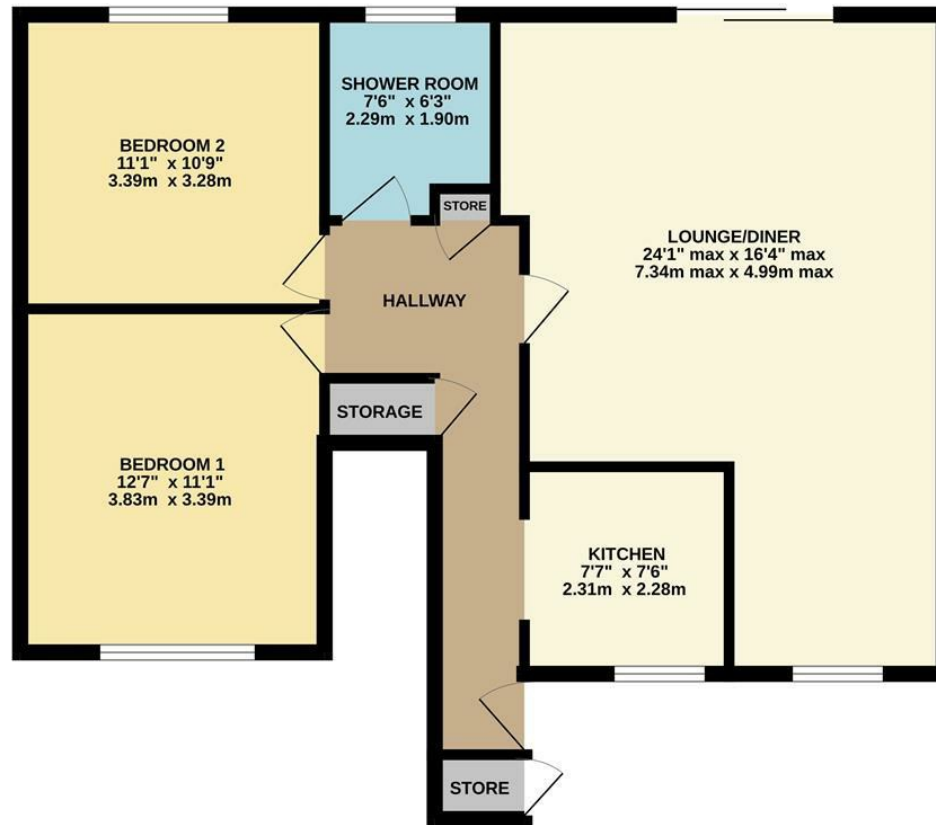
- Ground Floor Apartment
- Two bedrooms
- Spacious Accommodation
- Refitted Bathroom
- Close Proximity To Town Centre
- Single Garage
- Patio and communal gardens



Energy Efficiency Rating		
	Current	Potential
Very energy efficient - lower running costs		
(92 plus) A		
(81-91) B		
(69-80) C	72	75
(55-68) D		
(39-54) E		
(21-38) F		
(1-20) G		
Not energy efficient - higher running costs		
England & Wales	EU Directive 2002/91/EC	



GROUND FLOOR



Measurements are approximate. Not to scale. Illustrative purposes only.
Made with Metropix ©2025



These particulars are believed to be accurate but they are not guaranteed and do not form a contract. Neither Jordan Fishwick nor the vendor or lessor accept any responsibility in respect of these particulars, which are not intended to be statements or representations of fact and any intending purchaser or lessee must satisfy himself by inspection or otherwise as to the correctness of each of the statements contained in these particulars. Any floorplans on this brochure are for illustrative purposes only and are not necessarily to scale.

Offices at: Chorlton, Didsbury, Disley, Hale, Glossop, Macclesfield, Manchester Deansgate, Manchester Whitworth Street, New Mills, Sale, Wilmslow and Withington

36-38 Alderley Road, Wilmslow SK91JX
01625 532000

wilmslow@jordanfishwick.co.uk
www.jordanfishwick.co.uk